

About the role – DofE Support Team Member

Outline role description

Outline:

Members of the District DofE Support Team will work together to help provide the Duke of Edinburgh scheme across South West Cheshire. The primary responsibility would concern the planning, preparation and delivery of expeditions across all levels (Bronze, Silver & Gold). We are particularly keen to recruit members who have experience in this area, including qualified DofE assessors and/or supervisors. However, we also welcome applicants who would like to gain such qualifications, and will support them to do so.

They will also support young people across the other elements of the award; Physical, Skill & Volunteering (Plus Residential at Gold level), regularly checking on progress and offering support if needed in finding opportunities if participants are struggling.

The DofE Support Team is a Sub-Team of the District 14-24 Team, and will also liaise with the Programme Team in planning and organising expeditions.

Responsible to:

DofE Sub Team Leader – Alistair Williams

District 14-24 Team Leader – Thomas Austin

Accreditations for this role:

None

DofE assessor/supervisor would be desirable.

Main contacts:

District 14-24 Team Leader, DofE Sub Team Leader, Top Awards Coordinator, District 14-24 Team Members, Members of District Explorer & Network Section Teams.

Appointment requirements:

Must successfully complete the Welcome process (including acceptable personal enquiries and acceptance of The Scout Association's policies). All relevant learning must be completed during the appointment, and ongoing safeguarding, safety, and first response training must be completed.

Main tasks:

As follows:

- Preparing participants with the relevant skills and knowledge to undertake expeditions.
- Planning, organisation and running of expeditions across all levels (Bronze, Silver & Gold); including both practice and qualifying expeditions.
- Assessment or Supervision of practice and qualifying expeditions.
- Support participants across the other elements to the award; Physical, Skill & Volunteering (Plus Residential at Gold level).
- Create & maintain relevant contacts within the local community which could assist with gaining the DofE awards.

Additional key tasks to help volunteers with the programme:

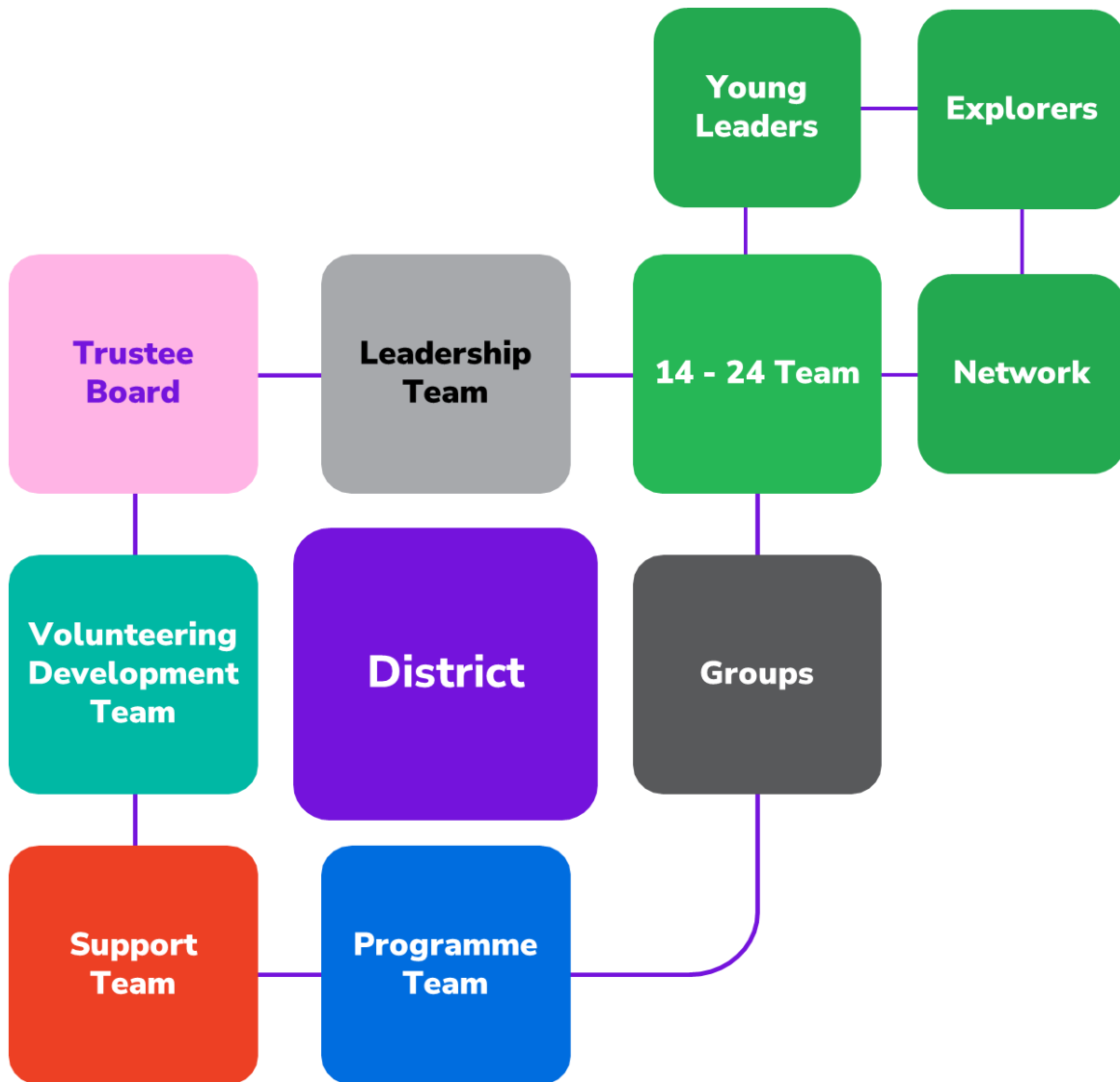
- Support adult volunteers to help participants choose their programmes and set their timescales & goals, promoting suitable local opportunities.
- Development of resources/workshops to help build volunteers/participants/parents' knowledge of DofE within South West Cheshire.

Knowledge and experience:

Knowledge or experience of one or more of the following subjects would be an advantage:

- Valid DofE Assessor qualification
- Valid DofE Supervisor training
- Previous experience of the award, including being an award holder
- Adventurous outdoor activities permits – hillwalking, canoeing, kayaking etc.
- Desire to gain a DofE qualification / activity permit

Structure and Function of Teams in South West Cheshire



District Leadership Team: leads, inspires, and motivates volunteers in South West Cheshire.

Trustee Board: provides governance to ensure the District is run safely and legally.

Volunteering Development Team: ensures volunteers in the District are welcomed, supported and well looked after.

Support Team: ensures the smooth running of the District.

Programme Team: supports the District's section teams to work together and delivers events and activities under the District banner.

14-24 Team: supports volunteers in Explorer, Young Leader and Scout Network Section Teams to ensure that great programmes are planned and delivered for young people in this age range.

What does the District 14-24 Team do?

The District 14-24 Team supports volunteers in Explorer Scout, Young Leader and Scout Network Section Teams to ensure that great programmes are planned and delivered which cater for the needs of this age group.

The 14-24 Team's tasks include:

- Make sure Explorer Scout, Young Leader and Scout Network Sections run smoothly, and that Section provision across the District is adequate to meet demand.
- Deliver excellent Explorer Scout, Young Leader and Scout Network programmes across the District, including support for young people to achieve their Top Awards.
- Help Section Teams to create an inclusive and welcoming environment for young people, and to make changes when needed so that the environment and activities are accessible for everyone.
- Ensure that decision making in the 14-24 team and its Sections is shaped by the young people.
- Work with Group and Section Teams to provide Young Leaders for all Squirrel, Beaver, Cub and Scout Section Teams across the District, and to ensure that Young Leaders can access relevant learning to help them excel in their roles.
- Provide and promote opportunities for young people in the District to participate in International trips and expeditions.
- Run and manage the District's DofE provision, ensuring all young people in this age range are supported to achieve their DofE awards.

As a member of the DofE Support Team, you'll work within the rest of your Team to help it accomplish its tasks. The responsibilities of this role are defined in the role description on page 3.